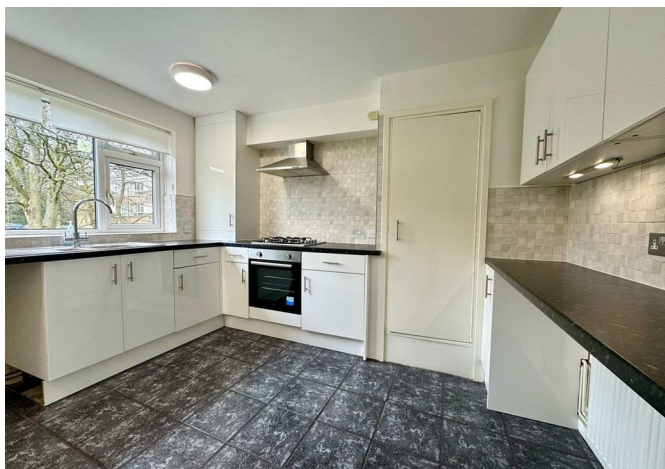


The logo for BRICK MANAGEMENT + LETTINGS is located in the top left corner. It features the word "BRICK" in a large, bold, teal font, with "MANAGEMENT + LETTINGS" in a smaller, white font below it. The text is set against a black background with a teal geometric shape on the left side.

22 Whetstone Close Farquhar Road, Edgbaston, Birmingham, B15 2QL

£1,100 Per month



22 Whetstone Close Farquhar Road, Edgbaston, Birmingham, B15 2QL

£1,100 Per month

New to the market, this first floor apartment is situated just off Farquhar Road in Edgbaston, one of Birmingham's premier avenues and less than a 10 minute drive from the city centre.

The property comprises an entrance hallway with ample storage leading into a large carpeted living area, with pleasant views of the well-maintained grounds. A separate modern kitchen offers plenty of storage and space for a washing machine and fridge/freezer. There are two carpeted double bedrooms and a separate family sized bathroom with bath and shower and neutral decoration throughout.

Access is via a communal entrance hall with security answer phone. Additionally, there is a garage located in a separate block for additional storage with one off-street parking space included.

Whetstone Close is conveniently located near the Queen Elizabeth Hospital, the University of Birmingham and the University train station, all just a short walk away.

Description



Situation



Unfurnished

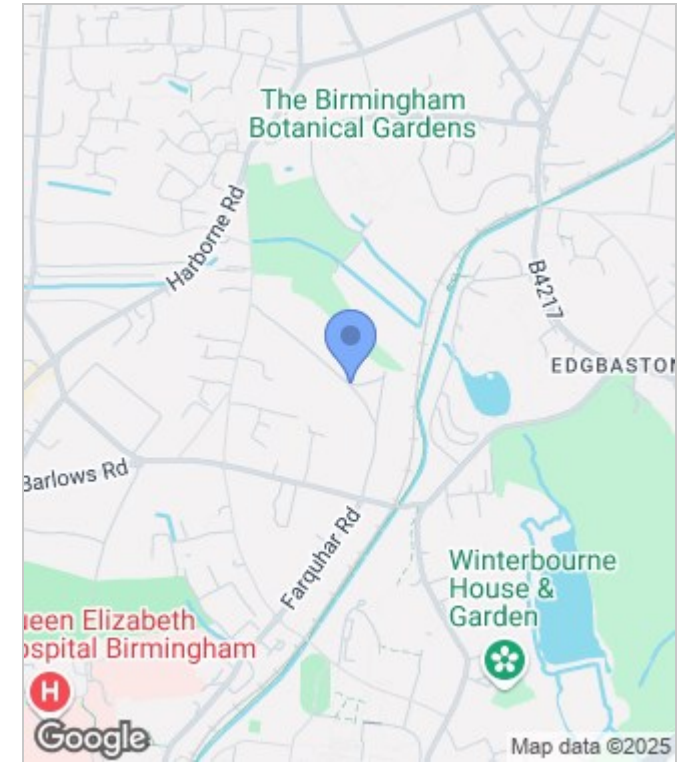
Council Tax Band: C

Available: 17th February 2025

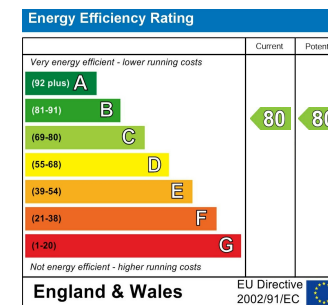
Floor Plans



Area Map



Energy Performance Graph



These particulars, whilst believed to be accurate are set out as a general outline only for guidance and do not constitute any part of an offer or contract. Intending purchasers should not rely on them as statements of representation of fact, but must satisfy themselves by inspection or otherwise as to their accuracy. No person in this firm's employment has the authority to make or give any representation or warranty in respect of the property.