

BRICK
MANAGEMENT + LETTINGS



51 Wraysbury House 4-16 London Road, Staines-Upon-Thames, London, TW18 4BP

£1,250 Per month



51 Wraysbury House 4-16 London Road, Staines-Upon-Thames, London, TW18 4BP

£1,250 Per month

New to the market, this well presented, unfurnished compact one bedroom duplex apartment is located in the popular Wraysbury House development.

This impressive property benefits from a lower level open plan living area with wooden flooring and stylish fully fitted kitchen with breakfast bar, lower level luxury shower room, upper level large double bedroom with fitted wardrobe, secure entry-phone access and neutral decoration throughout.

The property has one allocated parking space in the secure underground car park.

Wraysbury house is just a 5 minute walk from Staines town centre and the mainline railway station. The M25 is just a five minute drive away offering easy access to Heathrow Airport.

Description



Situation

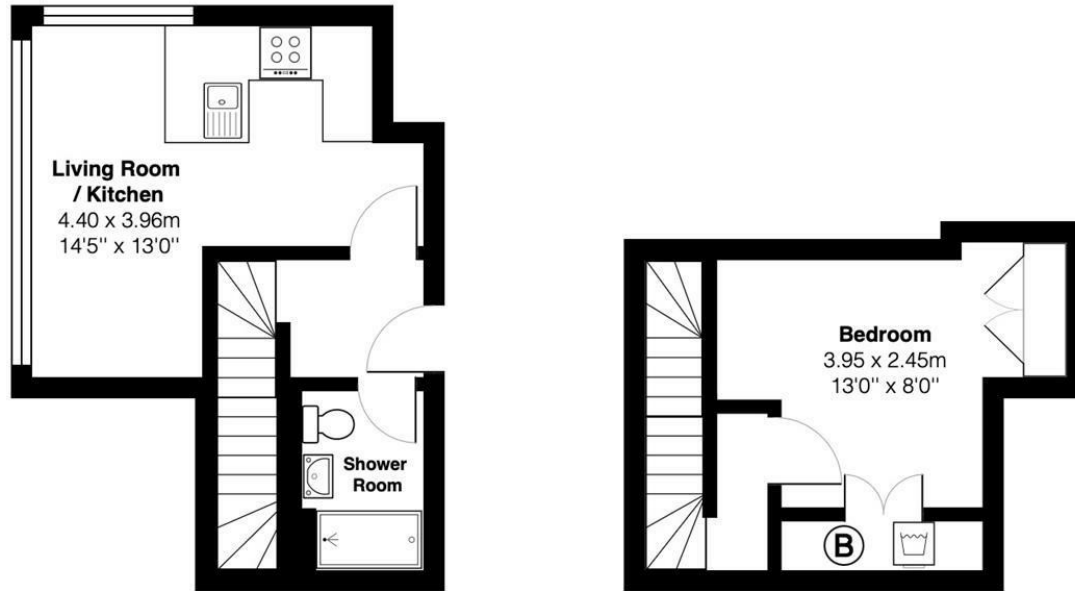


Unfurnished

Council Tax Band: C

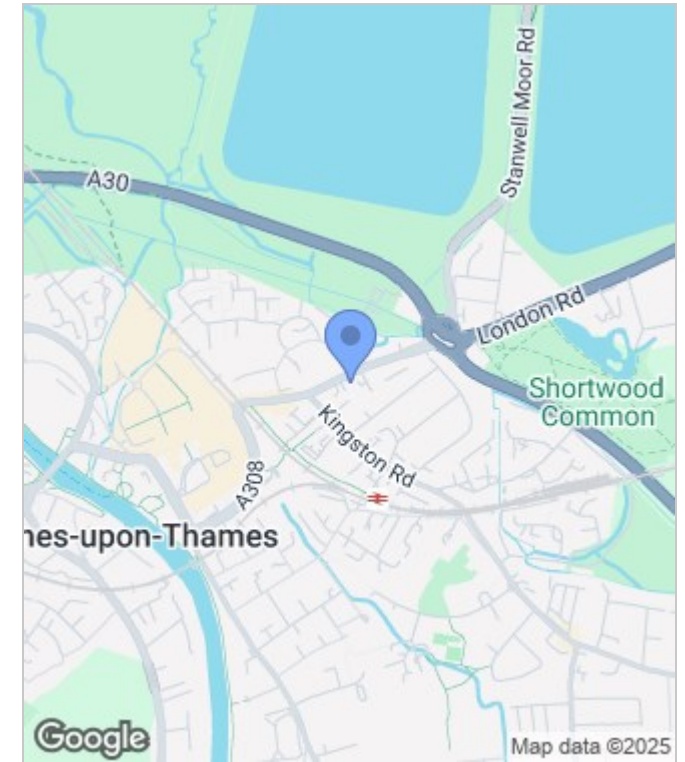
Available: 3rd March 2025

Floor Plans

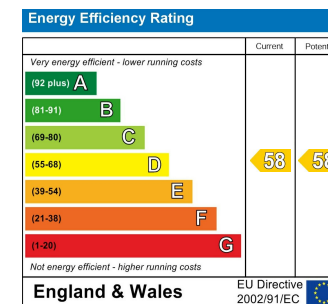


All measurements are approximate and for display purposes only

Area Map



Energy Performance Graph



These particulars, whilst believed to be accurate are set out as a general outline only for guidance and do not constitute any part of an offer or contract. Intending purchasers should not rely on them as statements of representation of fact, but must satisfy themselves by inspection or otherwise as to their accuracy. No person in this firm's employment has the authority to make or give any representation or warranty in respect of the property.