



29 Botanica Apartments 1 Watermeadow Lane, Chelsea, London, SW6 2WE

£2,450 Per month



## 29 Botanica Apartments 1 Watermeadow Lane, Chelsea, London, SW6 2WE

£2,450 Per month

New to the market, this stunning fourth floor spacious one bedroom executive apartment is located in the Andrena Apartments, part of the sought after newly built Chelsea Botanica development.

This impressive property benefits from a large open plan living area with wooden flooring, storage cupboard and access to a long private balcony, stylish fully integrated kitchen and separate utility cupboard with washer dryer, large double bedroom with dressing area, luxury bathroom suite with bath and shower, neutral decoration throughout, underfloor heating throughout and secure video entry.

Residents have access on an on site concierge service, internal courtyard garden and Peloton and weights room.

Chelsea Botanica is located next to the Harbour Club and Imperial Park, just a short walk from Imperial Wharf Station, Chelsea Harbour Pier and the Kings Road.

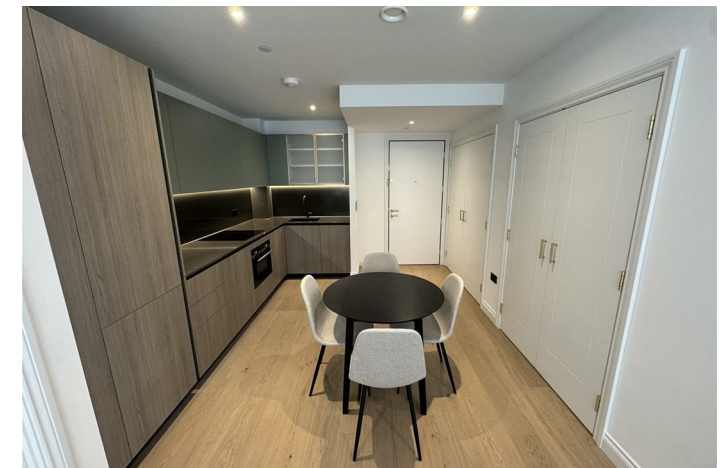
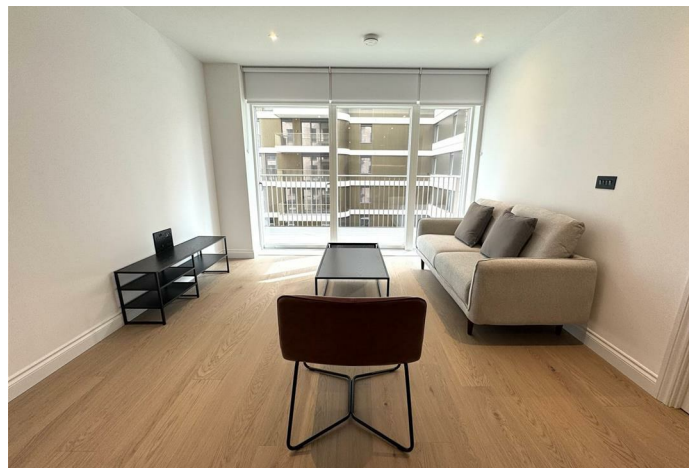
\* Sorry no allocated parking \*

\* Brand new furniture pack and curtains to be fitted \*

## Description



## Situation



Furnished

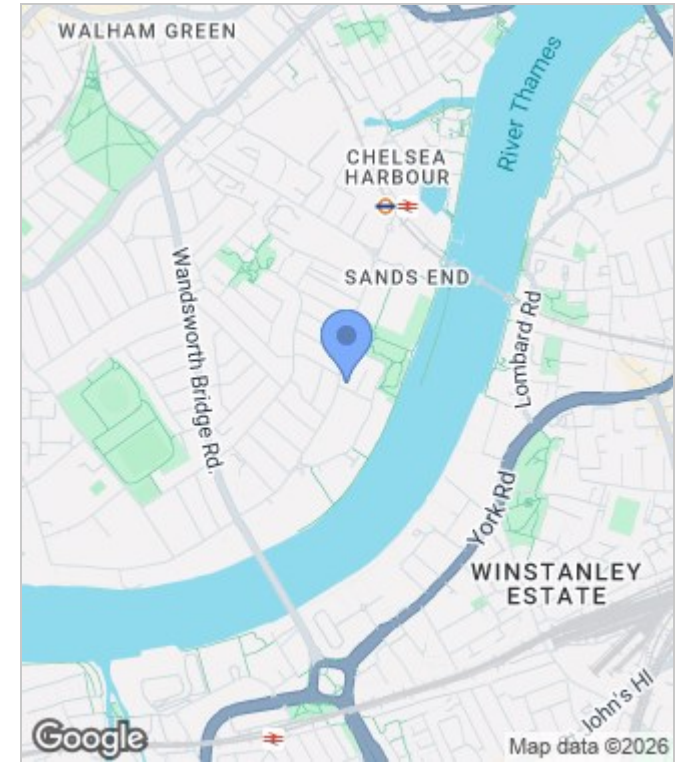
Council Tax Band: New Build

Available: 23rd March 2026

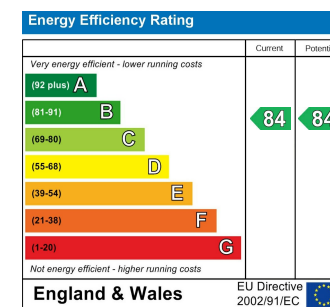
## Floor Plans



## Area Map



## Energy Performance Graph



These particulars, whilst believed to be accurate are set out as a general outline only for guidance and do not constitute any part of an offer or contract. Intending purchasers should not rely on them as statements of representation of fact, but must satisfy themselves by inspection or otherwise as to their accuracy. No person in this firm's employment has the authority to make or give any representation or warranty in respect of the property.