



Apartment 4 24 Legge Lane, Birmingham, B1 3LY

£1,000 Per month



## Apartment 4 24 Legge Lane, Birmingham, B1 3LY

**£1,000 Per month**

New to the market, this impressive one double bedroom apartment is located on the first floor of the popular Scholars Quarter development in the heart of the Jewellery Quarter, just a short walk from Birmingham city centre and numerous local amenities.

The property benefits from an entrance hallway with ample storage, leading into a large open plan living room/dining area with contemporary wooden flooring and stylish grey kitchen with integrated appliances. Also off the hallway is a large carpeted double bedroom and luxury bathroom with bath and shower.

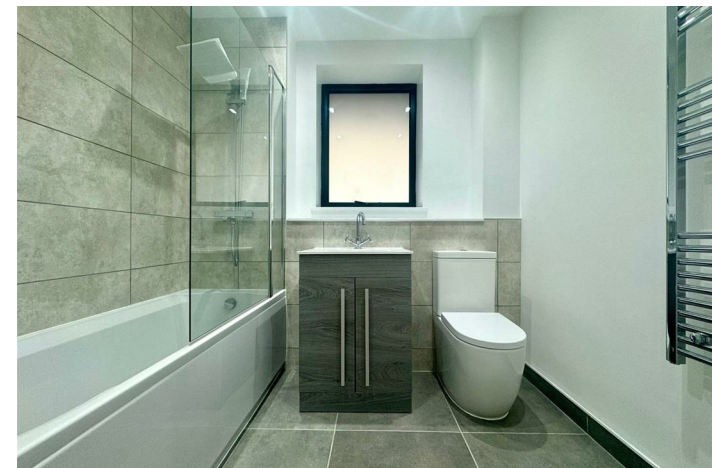
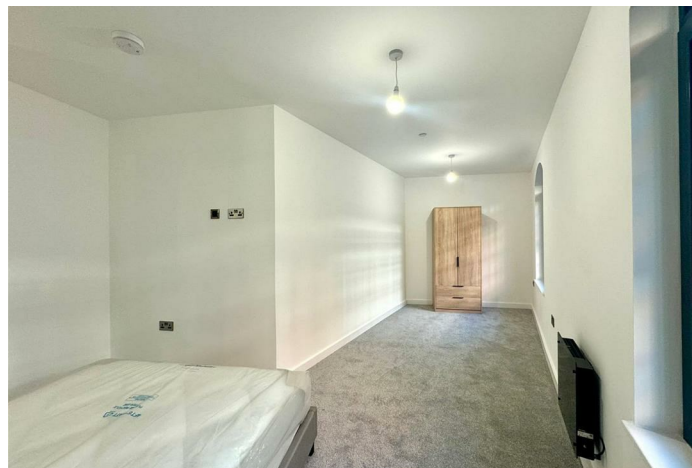
Offered on a furnished basis, with secure video-entry phone access and neutral decoration throughout.

\* Sorry, no allocated parking with this property. \*

## Description



## Situation

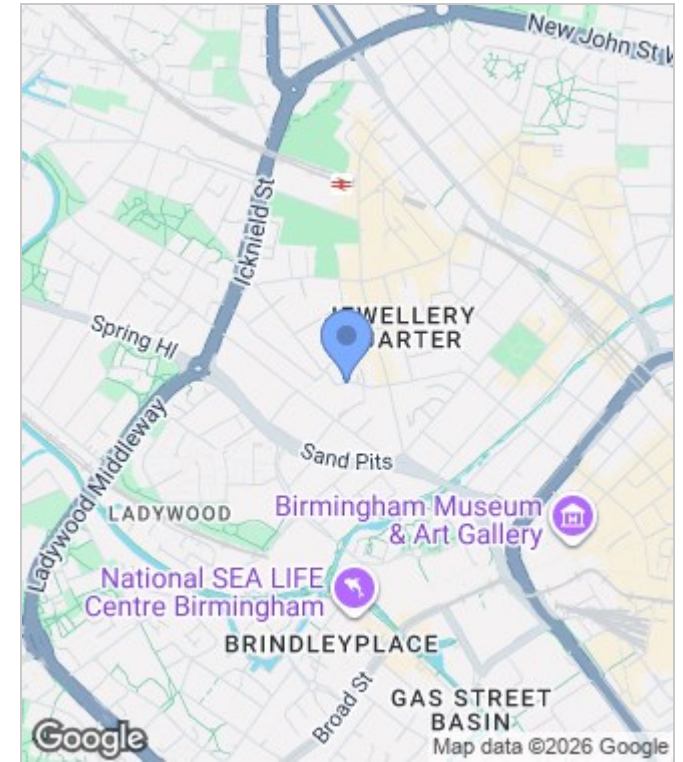


Furnished  
Council Tax Band: New Build  
Available: 27th June 2026

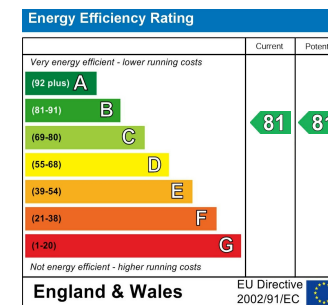
## Floor Plans



## Area Map



## Energy Performance Graph



These particulars, whilst believed to be accurate are set out as a general outline only for guidance and do not constitute any part of an offer or contract. Intending purchasers should not rely on them as statements of representation of fact, but must satisfy themselves by inspection or otherwise as to their accuracy. No person in this firm's employment has the authority to make or give any representation or warranty in respect of the property.