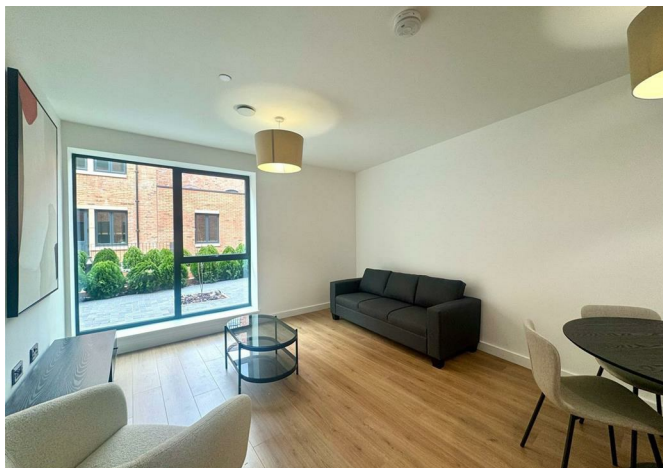




Apartment 17 23 Legge Lane, Birmingham, B1 3LX
£1,225 Per month



Apartment 17 23 Legge Lane, Birmingham, B1 3LX

£1,225 Per month

New to the market, this impressive two double bedroom apartment is located on the ground floor of the recently built Scholars Quarter development in the heart of the Jewellery Quarter, just a short walk from Birmingham city centre and numerous local amenities.

The property benefits from a long entrance hallway with ample storage, leading into a large open plan living room/dining area with wooden flooring and internal courtyard views, stylish grey kitchen with integrated appliances, two large double bedrooms which are both carpeted and a luxury bathroom with bath and shower.

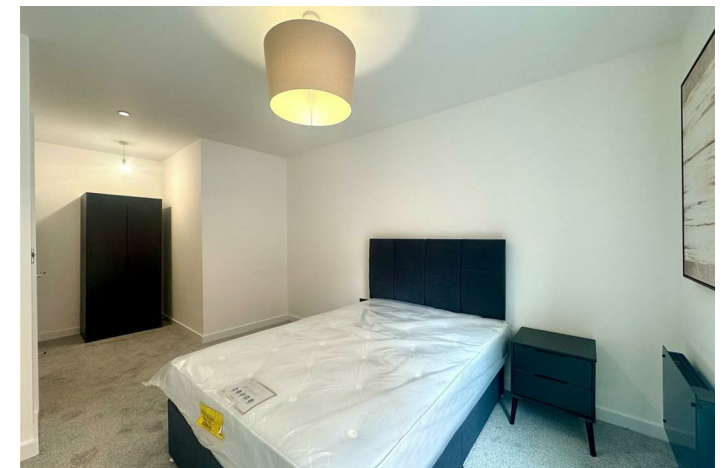
Offered on a furnished basis, with video-entry phone access and neutral decoration throughout.

* Sorry, no allocated parking with this property. *

Description



Situation



Furnished

Council Tax Band: C

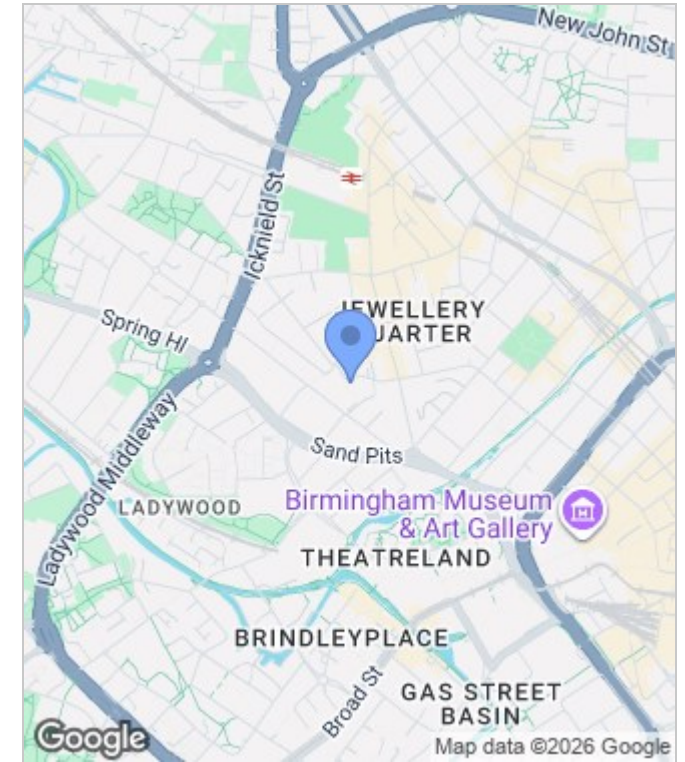
Available: 20th June 2026

Floor Plans

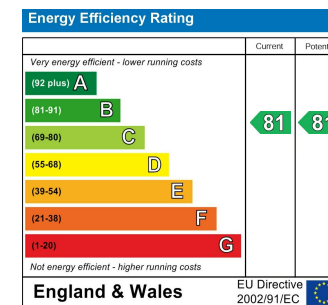


C2-3	59.26M ²
Bedroom 1	13.92M ²
Bedroom 2	10.90M ²
Bathroom	3.78M ²
Living Room/Kitchen	21.23M ²

Area Map



Energy Performance Graph



These particulars, whilst believed to be accurate are set out as a general outline only for guidance and do not constitute any part of an offer or contract. Intending purchasers should not rely on them as statements of representation of fact, but must satisfy themselves by inspection or otherwise as to their accuracy. No person in this firm's employment has the authority to make or give any representation or warranty in respect of the property.