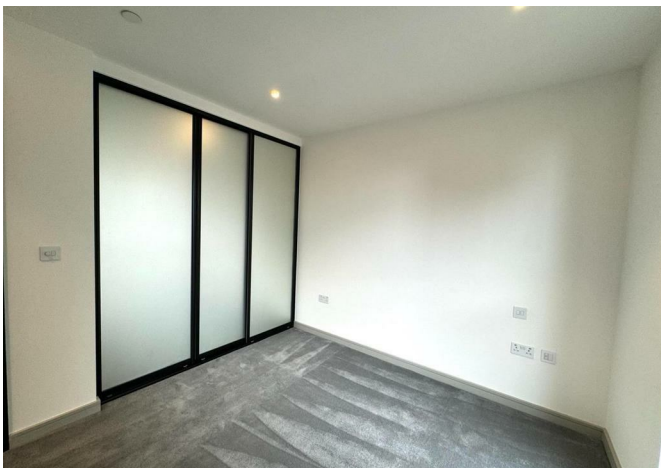




52 Lavender House 1 Eden Grove, Staines, Surrey, TW18 4ZU

£1,550 Per month



52 Lavender House 1 Eden Grove, Staines, Surrey, TW18 4ZU

£1,550 Per month

New to the market, this impressive unfurnished sixth floor spacious one bedroom executive apartment is located in the sought after Berkley Homes Eden Grove development.

The property itself benefits from a hallway leading to a large open plan living area with Karndean wooden flooring, stylish fully integrated kitchen, double bedroom with large built in double wardrobe, luxury bathroom suite with bath and rain shower plus utility cupboard, secure video entry system and neutral decoration throughout.

Residents have access to an on site 24 hour concierge service, co-working facility with private meeting room, large fully equipped gymnasium, cinema room, internal courtyard garden and bike storage.

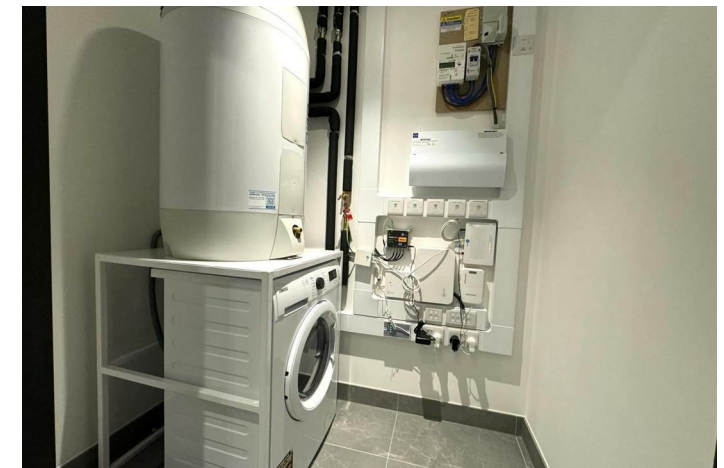
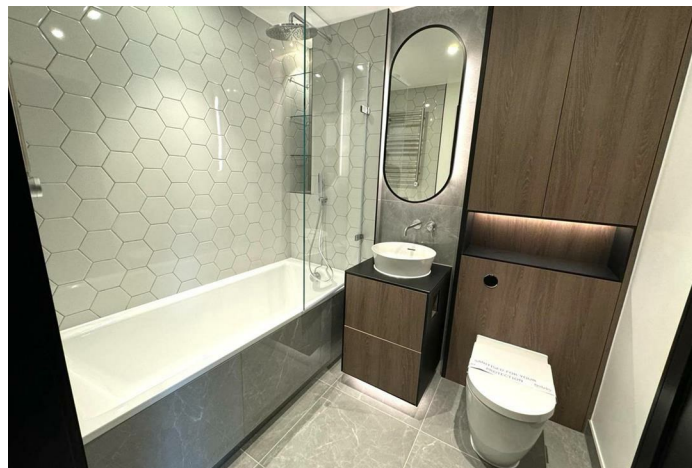
* Sorry this property does not come with allocated parking *

Eden Grove is just a five minute walk from Staines town centre and the mainline railway station. The M25 is a five minute drive away, offering easy access to Heathrow Airport.

Description



Situation

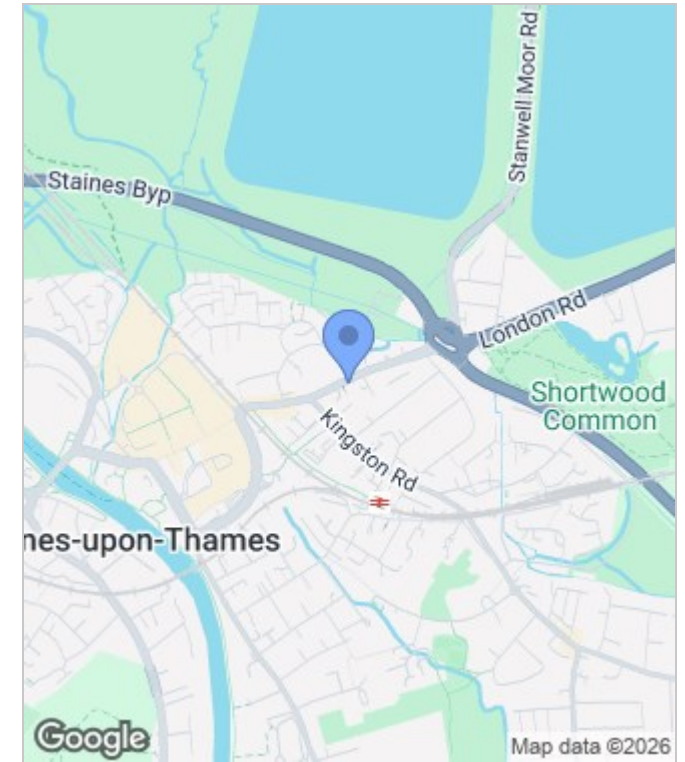


Unfurnished
Council Tax Band: New Build
Available: 5th August 2026

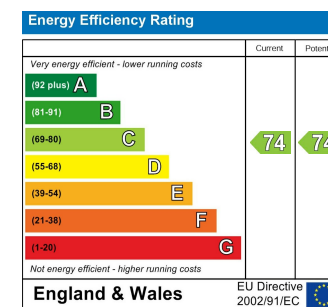
Floor Plans



Area Map



Energy Performance Graph



These particulars, whilst believed to be accurate are set out as a general outline only for guidance and do not constitute any part of an offer or contract. Intending purchasers should not rely on them as statements of representation of fact, but must satisfy themselves by inspection or otherwise as to their accuracy. No person in this firm's employment has the authority to make or give any representation or warranty in respect of the property.